



Friday 19 to Sunday 21 April 2019

Organising Authority:

**Hillarys Yacht Club Western Australia
with the cooperation of respective
Australian Sailing Class Associations**

SAILING INSTRUCTIONS

1 RULES

- 1.1** The regatta will be governed by the current rules as defined in The Racing Rules of Sailing, the special regulations of Australian Sailing, the rules of the applicable classes and by the Sailing Instructions.
- 1.2** The Sailing Instructions will consist of the instructions in RRS Appendix S, Standard Sailing Instructions, and supplementary sailing instructions that will be on the official notice board located at Hillarys Yacht Club Regatta Office.

2 NOTICES TO COMPETITORS

- 2.1** Notices to competitors will be posted on the official notice board(s) located at Hillarys Yacht Club – Regatta Office located outside Junior Club House.

3 CHANGES TO SAILING INSTRUCTIONS

- 3.1** Any change to the sailing instructions will be posted before 0900 on the day it will take effect, except that any change to the schedule of races will be posted by 2000 on the day before it will take effect.

4 SIGNALS MADE ASHORE

- 4.1** Signals made ashore will be displayed at Hillarys Yacht Club flag pole outside the Junior Club House.
- 4.2** When flag AP is displayed ashore, ‘1 minute’ is replaced with ‘not less than 30 minutes’ in the race signal AP.

5 SCHEDULE OF EVENTS & RACES

5.1 Friday 19 April 2019

1500 - 1700 Registration

1300 - 1600 Class Association coaching

5.2 Saturday 20 April 2019

0800 - 0900 Registration

0830 – Volunteers’ Briefing

0900 – Competitors’ Briefing and Welcome

1000 - First warning Signal, subsequent races to follow

Up to 4 races may be sailed during an on-water session.

Should time permit then subsequent races may be scheduled in either morning or afternoon sessions.

No warning signal after 1630 on Saturday.

10 Races are intended for the regatta.

5.3 Sunday 21 April 2019

0830 – Volunteers’ Briefing

1000 - Warning signal, subsequent races to follow.

Followed by presentation of prizes at approx. 1630 in the Wet Bar.

No warning signal after 1430 on Sunday.

6 CLASSES and FLAGS

6.1 Classes of 5 or more registered boats will race under their approved class flag.

Classes with less than 5 registered boats may be included in a combined fleet for results if there are sufficient numbers, at the discretion of the Race Committee.

Invited classes include, but not limited to:

29er

125

Optimist Open (formerly Gold)

Optimist Intermediate (formerly Silver)

Optimist Green (formerly Bronze)

Laser 4.7

Laser Radial

Laser Standard

Open Bic

Tasar

7 RACING AREAS

- 7.1** The Racing Area/s will be the waters of the Indian Ocean adjacent to the Hillarys Marina as illustrated by the drawing attached - Attachment A.

8 THE COURSES

- 8.1** The diagrams in Attachment A show the Senior (Bravo) and Junior (Alpha) courses, the order in which marks are to be passed, and the side on which each mark is to be left.
- 8.2** The finish lines depicted in Attachment A may differ in angle between final mark and finish line leg, to enable the finish boat race officer clear sight for accurate identification of boat sail numbers.

9 MARKS

- 9.1** Marks 1, 2, 3 and 4 will be inflatable Pink buoys, 1A, 2A orange pimples, 1+ Yellow inflatable buoys, 5 Red Inflatable buoy provided in course diagrams Attachment A.

10 AREAS THAT ARE OBSTRUCTIONS

The following areas are designated as obstructions and are indicated in Attachment B: Cow Rocks, Wanneroo Reef, and Little Island

11 THE START

- 11.1** Races will be started by using RRS 26 with the warning signal made 5 minutes before the starting signal.
- 11.2** The starting line will be between a staff displaying an orange flag on the starting boat at the starboard end and the port-end starting mark, or boat.
- 11.3** Boats whose warning signal has not been made shall avoid the starting area during the starting sequence for other races.
- 11.4** A boat starting later than 4 minutes after her starting signal will be scored Did Not Start (DNS) without a hearing. This changes rule A4 and A5.

If General Recall is signalled, that fleet will start immediately afterwards in the next sequence. The raising of the next fleets' warning signal will not be delayed.

12 THE FINISH

- 12.1** The finishing line will be between a staff displaying an orange flag on the finishing boat at the starboard end and the port-end finishing mark. The finishing line and boat may be located down wind of the final buoy/s, as determined by the RO / Race Committee.

13 PENALTY SYSTEM

- 13.1** The Scoring Penalty, rule 44.3, will apply. The penalty will be 5 places.

14 TIME LIMITS AND TARGET TIMES

- 14.1** Time limits and target times are as follows:

<i>Class</i>	<i>Time limit</i>	<i>Target time</i>	<i>Mark 1</i>
<i>Optimist</i>	<i>60 mins</i>	<i>35 mins</i>	<i>20 mins</i>
<i>Open Bic</i>	<i>60 mins</i>	<i>35 mins</i>	<i>20 mins</i>
<i>125</i>	<i>60 mins</i>	<i>35 mins</i>	<i>20 mins</i>
<i>Laser</i>	<i>75 mins</i>	<i>45 mins</i>	<i>20 mins</i>
<i>Tasar</i>	<i>75 mins</i>	<i>45 mins</i>	<i>20 mins</i>
<i>9er</i>	<i>75 mins</i>	<i>45 mins</i>	<i>20 mins</i>

If no boat has passed Mark 1 within the Mark 1 time limit, the race will be abandoned. Failure to meet the target time will not be grounds for redress. This changes rule 62.1(a).

- 14.2** Boats failing to finish within **15** minutes after the first boat sails the course and finishes will be scored Did Not Finish (DNF) without a hearing. This changes rules 35, A4 and A5.

15 PROTESTS AND REQUESTS FOR REDRESS

- 15.1** Boats intending to protest shall inform the Race Committee immediately after finishing by approaching the starboard side of the Race Committee vessel at the Finish line and hailing the protested boat's sail number. This changes RRS 61.1.
- 15.2** Protest forms are available at the at Hillarys Yacht Club Regatta Office. Protests and requests for redress or reopening shall be delivered there

within the appropriate time limit.

15.3 For each Class, the protest time limit is **30** minutes after the last boat has finished the last race of the day.

15.4 Notices will be posted no later than 30 minutes after the protest time limit to inform competitors of hearings in which they are parties or named as witnesses. Hearings will be held in the protest room, located at Hillarys Yacht Club – Regatta Office.

15.5 Notices of protests by the race committee will be posted to inform boats under rule 61.1(b).

15.6 On the last scheduled day of racing a request for reopening a hearing shall be delivered

- (a) within the protest time limit if the requesting party was informed of the decision on the previous day;
- (b) no later than 30 minutes after the requesting party was informed of the decision on that day.

This changes rule 66.

15.6 On the last scheduled day of racing a request for redress based on a decision shall be delivered no later than 30 minutes after the decision was posted. This changes rule 62.2.

15.7 Decisions of the Protest Committee will be final as provided in rule 70.5.

16 SCORING

16.1 The Low Point scoring system, Appendix A4.
10 Races are intended.

16.2 4 races are required to be completed to constitute a series.

- 16.3**
- (a) When fewer than 5 races have been completed, a boat's series score will be the total of her race scores.
 - (b) When from 5 to 8 races have been completed, a boat's series score will be the total of her race scores excluding her worst score.
 - (c) When 9 or more races have been completed, a boat's series score will be the total of her race scores excluding her two worst scores.

17 SAFETY REGULATIONS

- 17.1** Check-Out and Check-In: All boats shall sign in at the beginning of each days sailing (3 point penalty in the first race) at the regatta office and sign off at the completion of each days racing (3 point penalty in the last race for that day).
- 17.2** A boat that retires from a race shall notify the race committee as soon as possible.

18 REPLACEMENT OF CREW OR EQUIPMENT

- 18.1** Substitution of competitors will not be allowed without prior written approval of the [race committee].
- 18.2** Substitution of damaged or lost equipment will not be allowed unless authorized by the Race Committee. Requests for substitution shall be made to the committee at the first reasonable opportunity.

19 EQUIPMENT AND MEASUREMENT CHECKS

- 19.1** A boat or equipment may be inspected at any time for compliance with the class rules and sailing instructions. On the water, a boat can be instructed by a race committee equipment inspector or measurer to proceed immediately to a designated area for inspection.

20 EVENT ADVERTISING

- 20.1** Boats shall display event advertising supplied by the organising authority.

21 TRASH DISPOSAL

- 21.1** Boats shall not put trash in the water. Trash may be placed aboard support and race committee boats.

22 RADIO COMMUNICATION

- 22.1** Except in an emergency, a boat shall neither make radio transmissions while racing nor receive radio communications not available to all boats.

This restriction also applies to mobile telephones.

23 PRIZES

- 23.1** Prizes will be given for Fleets with 5 or more class competitors. Prizes will be distributed at the discretion of the Organising Committee.

24 DISCLAIMER OF LIABILITY

- 24.1** Competitors participate in the regatta entirely at their own risk. See Rule 4, Decision to Race. The organizing authority will not accept any liability for material damage or personal injury or death sustained in conjunction with or prior to, during, or after the regatta.

25 INSURANCE

- 25.1** Each participating boat shall be insured with valid third-party liability insurance with a minimum cover of \$10M per event or the equivalent.

ATTACHMENT A

Alpha and Bravo Courses:

Course Illustration – Trapezoid with signal boat for start and finish

I

Course: Inner Trapezoid

Signal	Mark Rounding Order
I2	Start – 1 – 4s/4p – 1 – 2 – 3p – Finish
I3	Start – 1 – 4s/4p – 1 – 4s/4p – 1 – 2 – 3p – Finish
I4	Start – 1 – 4s/4p – 1 – 4s/4p – 1 – 4s/4p – 1 – 2 – 3p – Finish

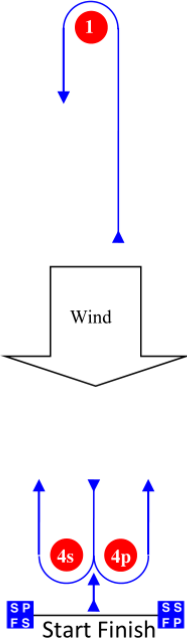
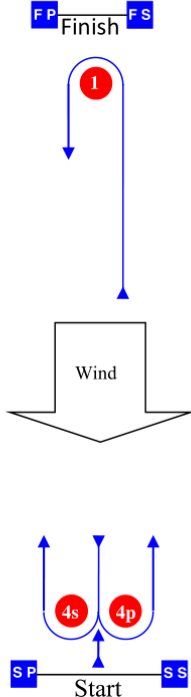
O

Course: Outer Trapezoid

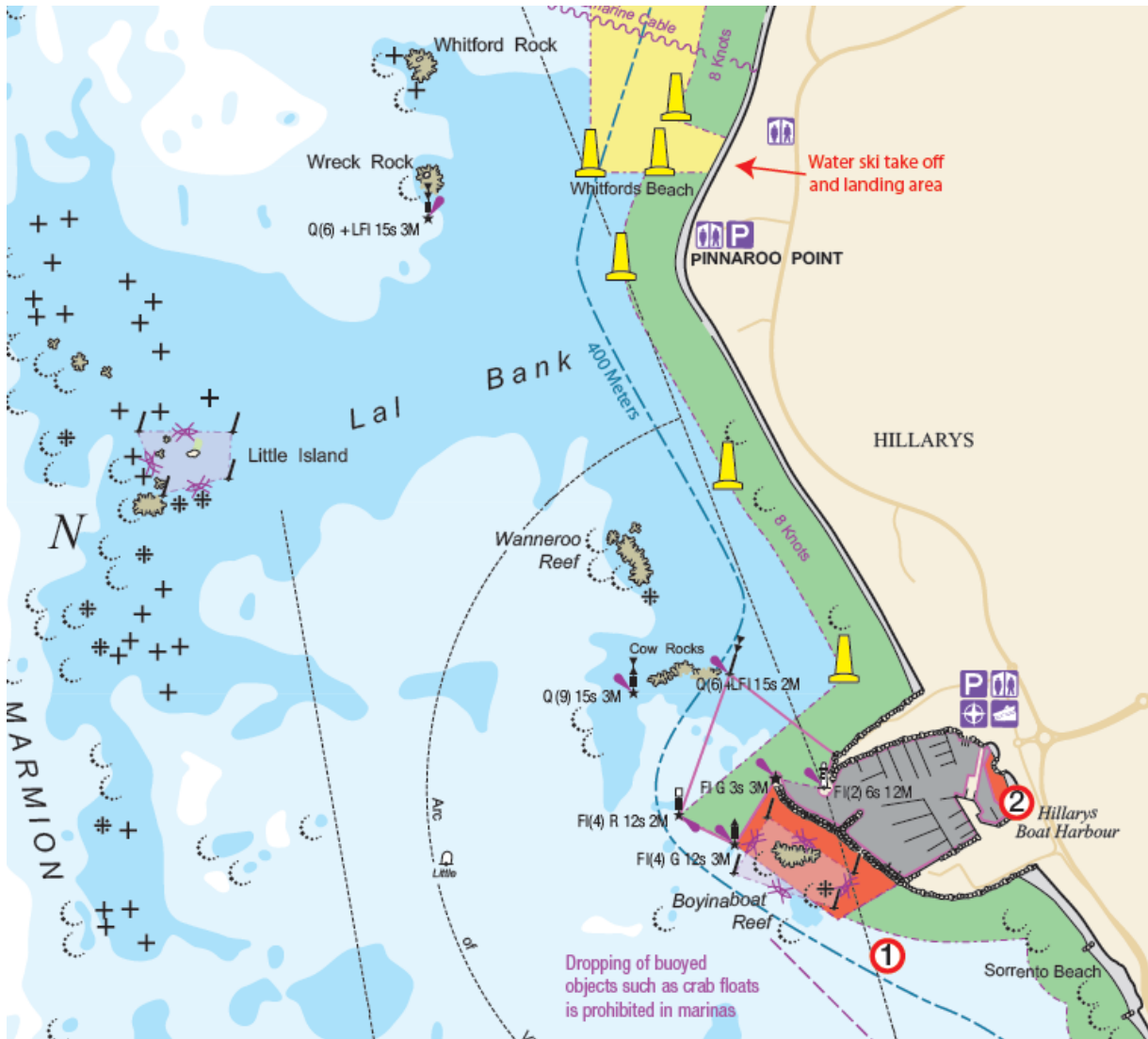
Signal	Mark Rounding Order
O2	Start – 1 – 2 – 3s/3p – 2 – 3p – Finish
O3	Start – 1 – 2 – 3s/3p – 2 – 3s/3p – 2 – 3p – Finish
O4	Start – 1 – 2 – 3s/3p – 2 – 3s/3p – 2 – 3s/3p – 2 – 3p – Finish

Mark	Description
1 2	
3s 3p	
4s 4p	
SS	Starting mark starboard end
SP	Starting mark port end
FS	Finishing mark starboard end
FP	Finishing mark port end

9er Windward-Leeward Course

Course Illustrations – Windward Leeward																	
<div style="font-size: 2em; font-weight: bold; margin-bottom: 10px;">L</div>  <p style="text-align: center;">Course: Leeward finish</p> <table border="1" style="width: 100%; border-collapse: collapse;"> <thead> <tr> <th style="width: 10%;">Signal</th> <th>Mark Rounding Order</th> </tr> </thead> <tbody> <tr> <td style="text-align: center;">L2</td> <td>Start – 1 – 4s/4p – 1 – Finish</td> </tr> <tr> <td style="text-align: center;">L3</td> <td>Start – 1 – 4s/4p – 1 – 4s/4p – 1 – Finish</td> </tr> <tr> <td style="text-align: center;">L4</td> <td>Start – 1 – 4s/4p – 1 – 4s/4p – 1 – 4s/4p – 1 – Finish</td> </tr> </tbody> </table>	Signal	Mark Rounding Order	L2	Start – 1 – 4s/4p – 1 – Finish	L3	Start – 1 – 4s/4p – 1 – 4s/4p – 1 – Finish	L4	Start – 1 – 4s/4p – 1 – 4s/4p – 1 – 4s/4p – 1 – Finish	<div style="font-size: 2em; font-weight: bold; margin-bottom: 10px;">W</div>  <p style="text-align: center;">Course: Windward Finish</p> <table border="1" style="width: 100%; border-collapse: collapse;"> <thead> <tr> <th style="width: 10%;">Signal</th> <th>Mark Rounding Order</th> </tr> </thead> <tbody> <tr> <td style="text-align: center;">W2</td> <td>Start – 1 – 4s/4p – Finish</td> </tr> <tr> <td style="text-align: center;">W3</td> <td>Start – 1 – 4s/4p – 1 – 4s/4p – Finish</td> </tr> <tr> <td style="text-align: center;">W4</td> <td>Start – 1 – 4s/4p – 1 – 4s/4p – 1 – 4s/4p – Finish</td> </tr> </tbody> </table>	Signal	Mark Rounding Order	W2	Start – 1 – 4s/4p – Finish	W3	Start – 1 – 4s/4p – 1 – 4s/4p – Finish	W4	Start – 1 – 4s/4p – 1 – 4s/4p – 1 – 4s/4p – Finish
Signal	Mark Rounding Order																
L2	Start – 1 – 4s/4p – 1 – Finish																
L3	Start – 1 – 4s/4p – 1 – 4s/4p – 1 – Finish																
L4	Start – 1 – 4s/4p – 1 – 4s/4p – 1 – 4s/4p – 1 – Finish																
Signal	Mark Rounding Order																
W2	Start – 1 – 4s/4p – Finish																
W3	Start – 1 – 4s/4p – 1 – 4s/4p – Finish																
W4	Start – 1 – 4s/4p – 1 – 4s/4p – 1 – 4s/4p – Finish																
<table border="1" style="width: 100%; border-collapse: collapse;"> <thead> <tr> <th style="width: 20%;">Mark</th> <th>Description</th> </tr> </thead> <tbody> <tr> <td style="text-align: center;">1</td> <td></td> </tr> <tr> <td style="text-align: center;">4s 4p</td> <td></td> </tr> <tr> <td style="text-align: center;">SS</td> <td>Starting mark starboard end</td> </tr> <tr> <td style="text-align: center;">SP</td> <td>Starting mark port end</td> </tr> <tr> <td style="text-align: center;">FS</td> <td>Finishing mark starboard end</td> </tr> <tr> <td style="text-align: center;">FP</td> <td>Finishing mark port end</td> </tr> </tbody> </table>		Mark	Description	1		4s 4p		SS	Starting mark starboard end	SP	Starting mark port end	FS	Finishing mark starboard end	FP	Finishing mark port end		
Mark	Description																
1																	
4s 4p																	
SS	Starting mark starboard end																
SP	Starting mark port end																
FS	Finishing mark starboard end																
FP	Finishing mark port end																

ATTACHMENT B



ATTACHMENT A



Hillarys Yacht Club

SAIL EASTER REGATTA 2018



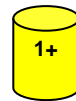
Boat Start - Wind in any direction

Tasar/29er - Start – 1+ – 4P/4S – 1+ – 5 – 3P/3S – 2 – 3P – Finish

National 125 - Start – 1 – 4P/4S – 1 – 2 – 3P/3S – 2 – 3P – Finish

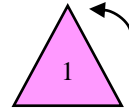
Laser Standard / Laser Radial - Start – 1 – 2 – 3P/3S – 2 – 3P/3S – 2 – 3P – Finish

Laser 4.7 / Open Bic - Start – 1 – 2 – 3P/3S – 2 – 3P -- Finish



Optimist Gold and Silver - Start – 1A – 4P/4S – 1A – 2A – 3P – Finish

Optimist Bronze - Start – 1A – 2A – 3P – Finish



All Marks are rounded to PORT except Gate 3S & Gate 4S

